



Tire Carrier Addon Table Installation

This document goes through the steps of installing the table addition to the GGM 80 Series Tire Carrier.





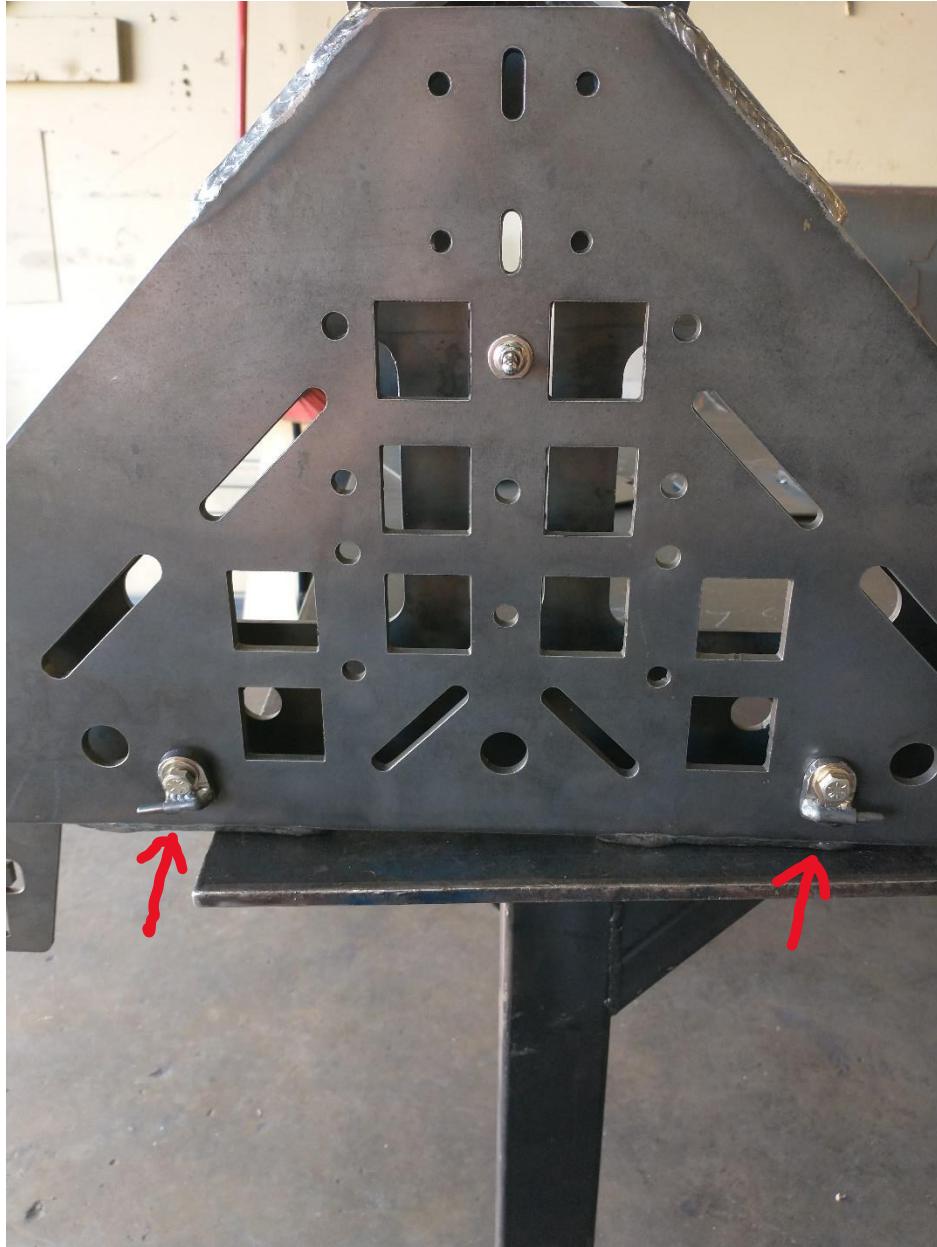
Through the beginning steps leave everything loose enough to make slight adjustments.

First install the latch stud into the hole shown. Use a washer on each side of the Tire Carrier.





Next, install the male hinges as shown. Use washers and provided 5/16 bolts. Make sure they are opposing directions.





Install the gold color bushings on each male hinge. Don't drop them.





Carefully slide the male hinge into the female side on the table. If you have trouble, remove one of the male hinges and get another set of hands to hold the table up then slide the hinge in and reinstall onto the tire carrier. Push the male hinges outward to close the gap and tighten. The table should swing freely with no resistance. If some resistance is felt loosen and readjust. Try to get the hinges to touch both sides of the bushing, a small gap is acceptable.





Install the button latch, leave loose.





Close table against latch stud. Tighten both latch and stud in place. Once tight, test latch action and adjust as necessary. It may take a few tries to get everything aligned nicely. *TIP* The stud does not need to stick out much. My name is Matt, the guy that designed this, if this was a PITA feel free to cuss my name during installation. Once complete you now have a place to set your trail soda, the max weight limit is 30 pounds so don't try to rebuild the engine on there. ENJOY!

